

Reelables

Introducing Bluetooth Tracking Labels

Reelables ultra-thin, cost-effective labels embedded with Bluetooth technology actively communicate location and automate data collection. They enable accurate, per-item tracking throughout your supply chain and logistics corridors providing best in class supply chain visibility.



Visibility



Locating a lost package or shipment is tedious and time-consuming – if it's possible at all. Reelables Bluetooth tracking labels communicate continuously, delivering real-time insights to improve accountability. Warehouses have the equivalent of performing a stock check every 10 seconds, and logistics companies can leverage breadcrumbs to track a shipment in transport.

Accuracy



Reelables labels remove human error from tracking and data management with automated data collection. Bluetooth technology can keep up with a large volume of labels passing through a choke point and read labels even if they're sandwiched between other parcels or packaging.

Operational Efficiency



No warehouse, 3PL, or cargo forwarding company has time or money to spare on manual processes or locating lost items. Replace outdated manual legacy processes with Reelables tracking and inventory automation systems to maximize workforce productivity and increase customer satisfaction.

Simple Implementation



Tracking your supply chain with Reelables doesn't require changing any of your warehouse processes, creating training programs, or even updating your existing processes. It works in the background to give your operations team visibility. Alert staff when exceptions arise and supply the information necessary to fix them in real time.

Reelables Bluetooth Demo Kits

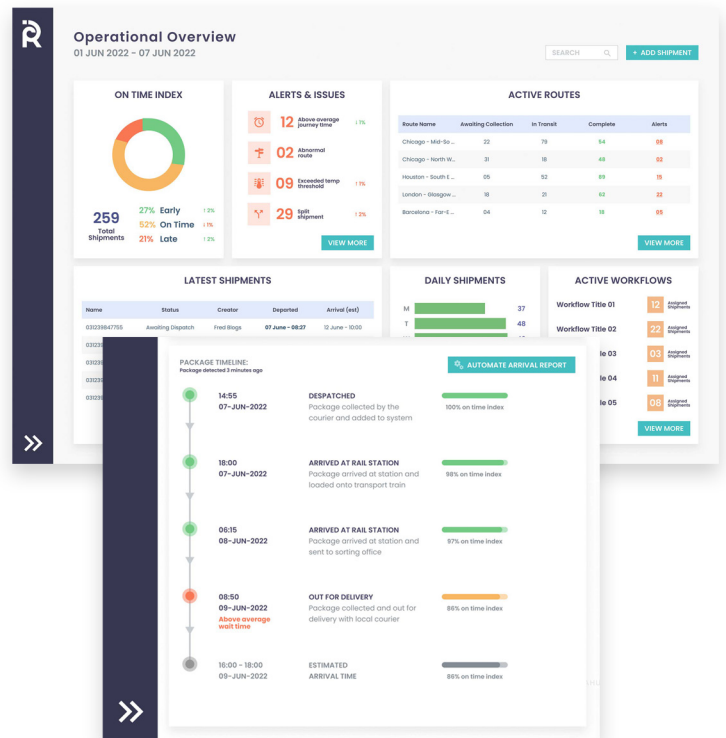
Easy and affordable with no commitment

What's Included

Reelables works with your team to develop and conduct a proof of concept to provide you with real-world data on the value of the system and the return on investment you can expect.

Choose either the cargo tracking or inventory tracking demo kit and receive:

- 200 preprinted labels
- 3 cell gateways
- 3 months of access to a data and analytics portal
- Software for your use case
- Onboarding support and POC



Take the first steps toward a modern track-and-trace solution with a Reelables Demo Kit

- ✓ Third-party logistics companies
- ✓ Cargo forwarders
- ✓ Value-added resellers providing supply chain and warehouse solutions

Order Now

To order your demo kit to experience first-hand how Reelables can provide your operation with enhanced visibility, greater accuracy, and improved operational efficiency, contact Reelables.

PLACE AN ORDER